

FEATURES & SERVICES

PRICE: **€637,500**

REF NO.: 25678

VIEW: PANORAMIC

□□TYPE: BUY TO LET, NEW
BUILT

□□LOCATION: DISTRICT 2,

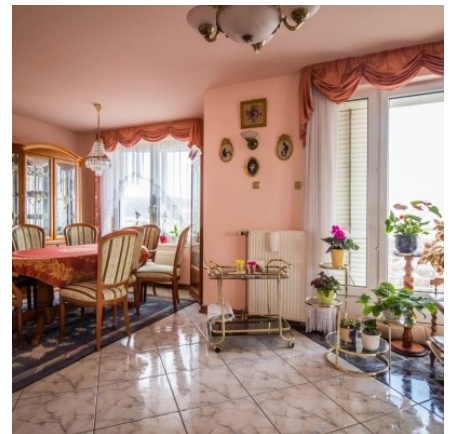
□□SZERÉNA ÚT

□□BEDROOMS: 3

□□SIZE: 136 SQM

□□FLOOR: 2

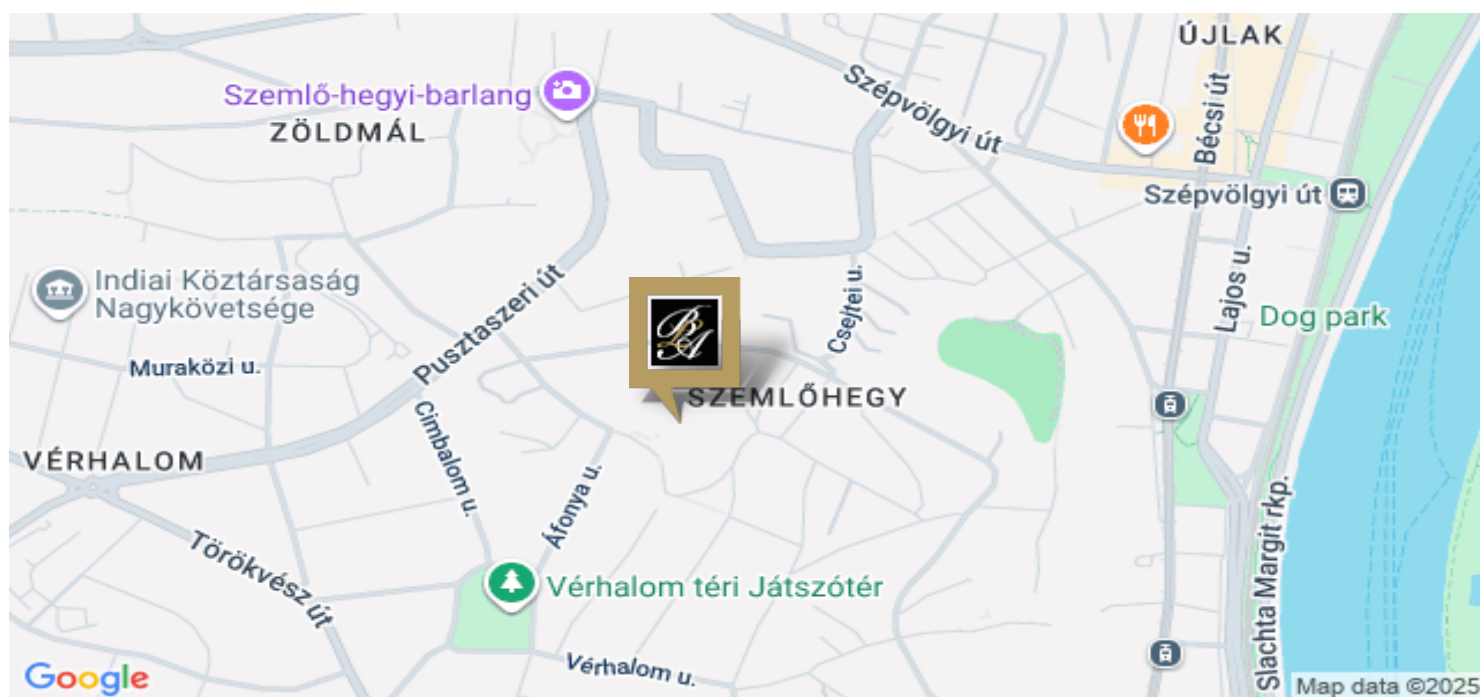
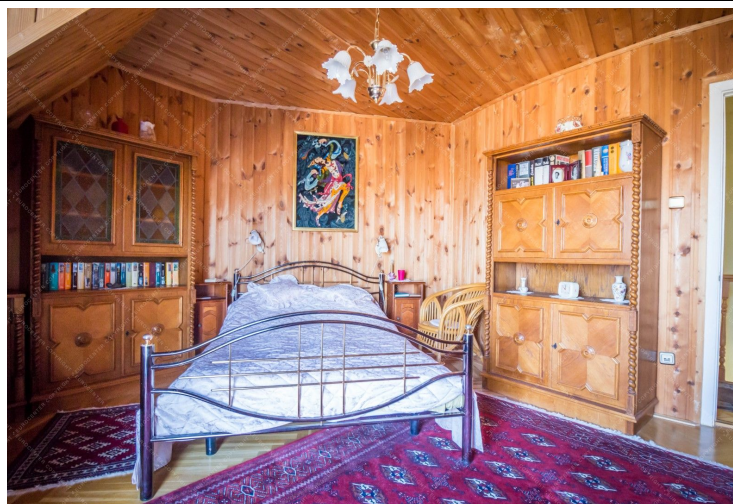
We offer for sale a 136-square-meter property with exceptional features in the prestigious Rózsadomb area. This elegant duplex apartment is located on the second floor of a well-maintained building with a tidy garden and only four units. The lower level includes a spacious living room, kitchen, pantry, and a guest toilet with a sink. Both the living room and kitchen have access to a balcony, perfect for relaxation. On the upper level, there are two bedrooms, a smaller study, and a bathroom. The bedrooms also feature balconies, offering breathtaking, unobstructed views. Both levels are designed with spacious hallways for convenient movement. The property is equipped with a modern central heating and hot water system. It includes a garage, which must be purchased for an additional price of HUF 10 million, a storage unit, and an optional outdoor parking space. The building's residents can also enjoy a shared sauna for relaxation. The apartment boasts a unique, permanent panoramic view encompassing both sides of the Danube, Buda, and Pest. The surrounding area is rich in greenery, classified as a nature reserve with significant ecological value. This property is a perfect choice for those seeking an exclusive, nature-close home in a tranquil yet easily accessible location.



+36 20 919 0005

www.budapestluxuryapartments.hu

© 2019 Budapest Luxury Apartments



+36 20 919 0005

www.budapestluxuryapartments.hu

© 2019 Budapest Luxury Apartments