

FEATURES & SERVICES

RENTAL FEE: **€1,500** / MONTH

REF NO.: 815992

□□TYPE: CLASSICAL

□□LOCATION: DISTRICT 13,

□□ÚJPESTI RAKPART

□□BEDROOMS: 1

□□SIZE: 93 SQM

□□FLOOR: 1

For Rent: Elegant, Renovated Apartment with Danube Panorama in the Palatinus Building Available for long-term lease is a meticulously renovated apartment located in the renowned Palatinus building, offering a stunning view of the Danube. This stylish home is equipped with soundproof windows and motorized blinds, ensuring comfort and privacy. Property Highlights:

Location: Situated in the Palatinus building, featuring an unparalleled Danube panorama.

Layout: The spacious living room can be partitioned with a drywall, making it easy to convert the apartment into a 3-bedroom layout.

Versatility: Ideal for residential or professional use, such as an office or medical practice, thanks to its favorable infrastructure.

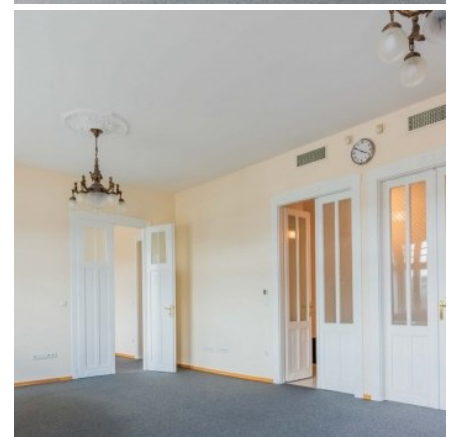
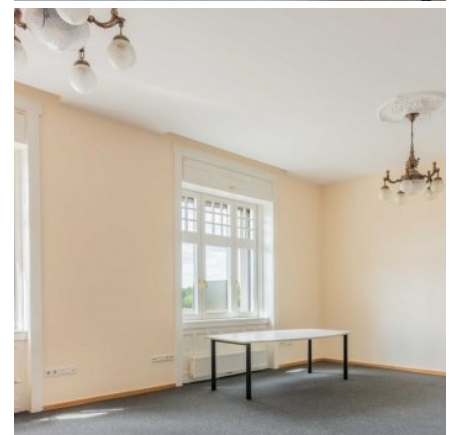
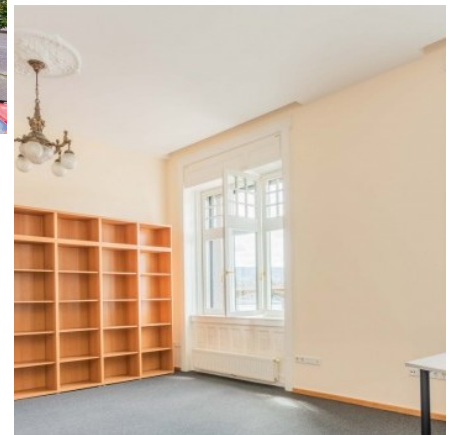
Rental Information:

Rent: The apartment is available unfurnished.

Deposit: Two months' rent required.

Move-in: The property is available for immediate occupancy with the payment of one month's rent and the deposit.

This property is perfect for a discerning tenant seeking an elegant and functional space with stunning views and versatile possibilities. Don't miss the opportunity to make this exceptional apartment your new home or office!



+36 20 919 0005

www.budapestluxuryapartments.hu

© 2019 Budapest Luxury Apartments

