

## FEATURES & SERVICES

RENTAL FEE: **€1,600** / MONTH

REF NO.: 402586

□□TYPE: NEW BUILT

□□LOCATION: DISTRICT 13,

□□BESSENYEI UTCA

□□BEDROOMS: 1

□□SIZE: 52 SQM

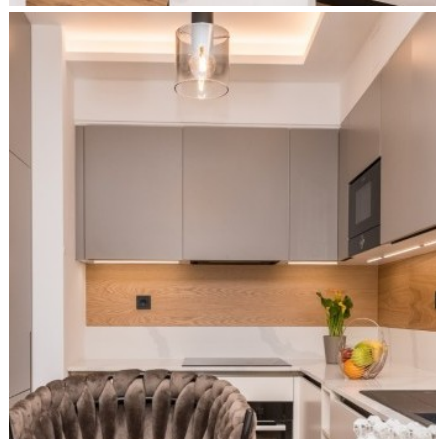
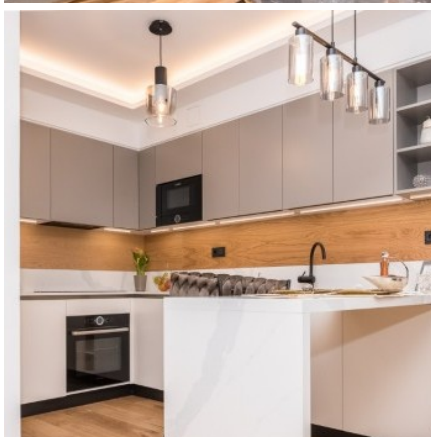
□□FLOOR: 8

VIEW: RIVER DANUBE

FURNISHED: YES

AIR CONDITIONED: YES

Be the first tenant of the brand new luxury apartment with a panoramic view of the Danube and a large terrace in the DUNA PEARL Apartment House on the iconic Pozsonyi Road in Budapest! The property is located on the 8th floor, there is an elevator in the building. The apartment has 1 bedroom, living room with dining area, kitchen, bathroom and a 12 sqm DUNA panoramic terrace. The property is furnished and mechanized. The apartment has ceiling cooling/heating. The property is equipped with brand new designer furniture and high quality German machines. -Premium quality flooring, real wood parquet-Smart Home system-Hotel style luxury standards and lifestyle-Interior terraced landscaped lounge-24 h reception, security service and security and security camera system. Underground garage with spacious large parking lot, PHEV Electric Digital Charger (on request + 2nd garage) Rental conditions: The given price is only the rental fee, other costs are not included. Utilities are payable based on consumption. Common charges are currently 30 000 HUF. Parking space rental: + 130EUR / month / unit Long-term rent only (min. 1-year lease).

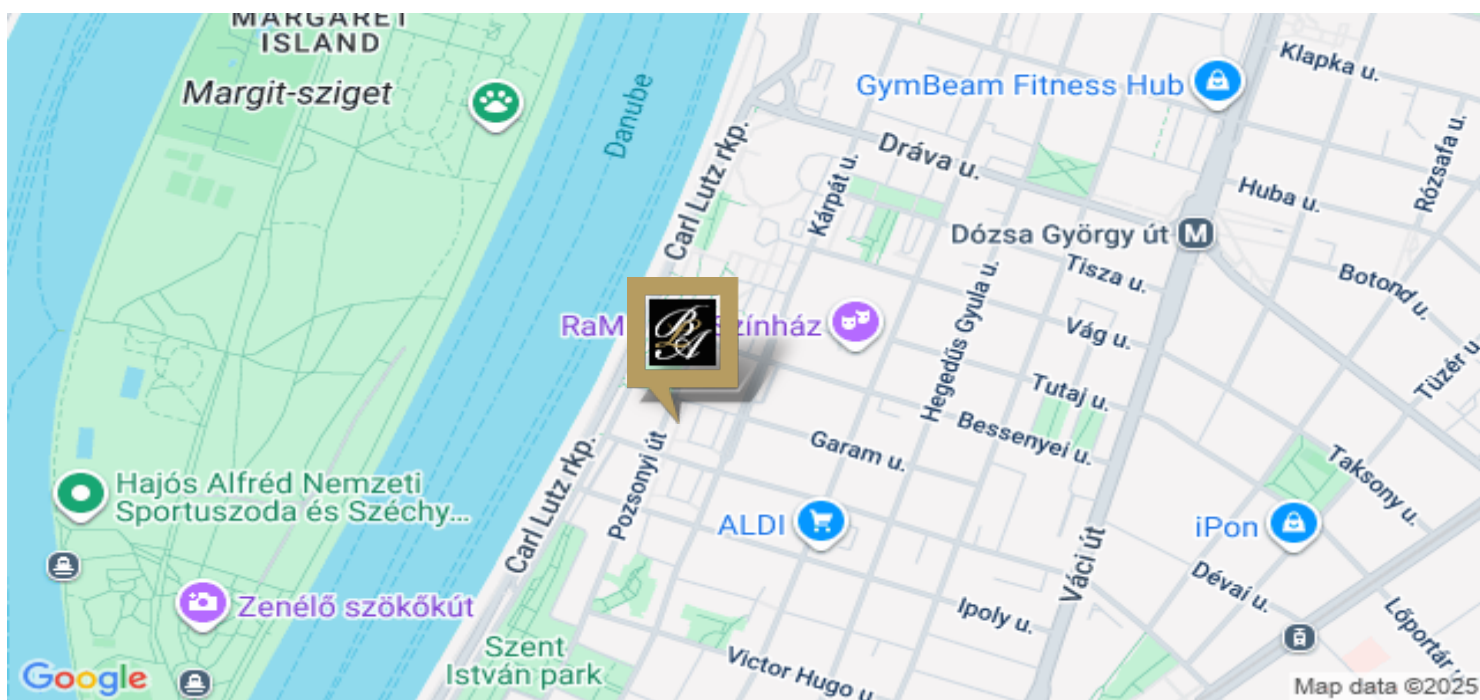


**+36 20 919 0005**

[www.budapestluxuryapartments.hu](http://www.budapestluxuryapartments.hu)

© 2019 Budapest Luxury Apartments





**+36 20 919 0005**

[www.budapestluxuryapartments.hu](http://www.budapestluxuryapartments.hu)

© 2019 Budapest Luxury Apartments